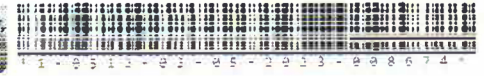




Office of the President of the Philippines
GOVERNANCE COMMISSION
FOR GOVERNMENT OWNED OR CONTROLLED CORPORATIONS
3/F, BDO Towers Paseo, 8741 Paseo De Roxas, Makati City, Philippines 1226



Management
System
ISO 9001:2015
www.tuv.com
ID: 9105080109

26 April 2023

MR. HERCULANO C. CO, JR.

Chairman

MR. MIGUEL E. UMALI

President and CEO (PCEO)

5/4/2023

PHILIPPINE NATIONAL CONSTRUCTION CORPORATION (PNCC)

KM. 15 East Service Road, Bicutan
Parañaque City

**RE: TRANSMITTAL OF 2023 CHARTER STATEMENT AND
STRATEGY MAP AND PERFORMANCE SCORECARD**

Dear Chairman Co and PCEO Umali,

We respectfully furnish you with the SIGNED 2023 PNCC Charter Statement and Strategy Map (**Annex A**) and Performance Scorecard (**Annex B**).

Your compliance with GCG M.C. No. 2012-07 and GCG M.C. No. 2023-01 will be highly appreciated.

Very truly yours,

Justice ALEX L. QUIROZ (ret.)
Chairperson

PHILIPPINE NATIONAL CONSTRUCTION CORPORATION	
Office of the President	
Received by:	VCN
Control No.	123-077
Date	5/4/2023
Time	10:31AM

PNCC STRATEGY MAP



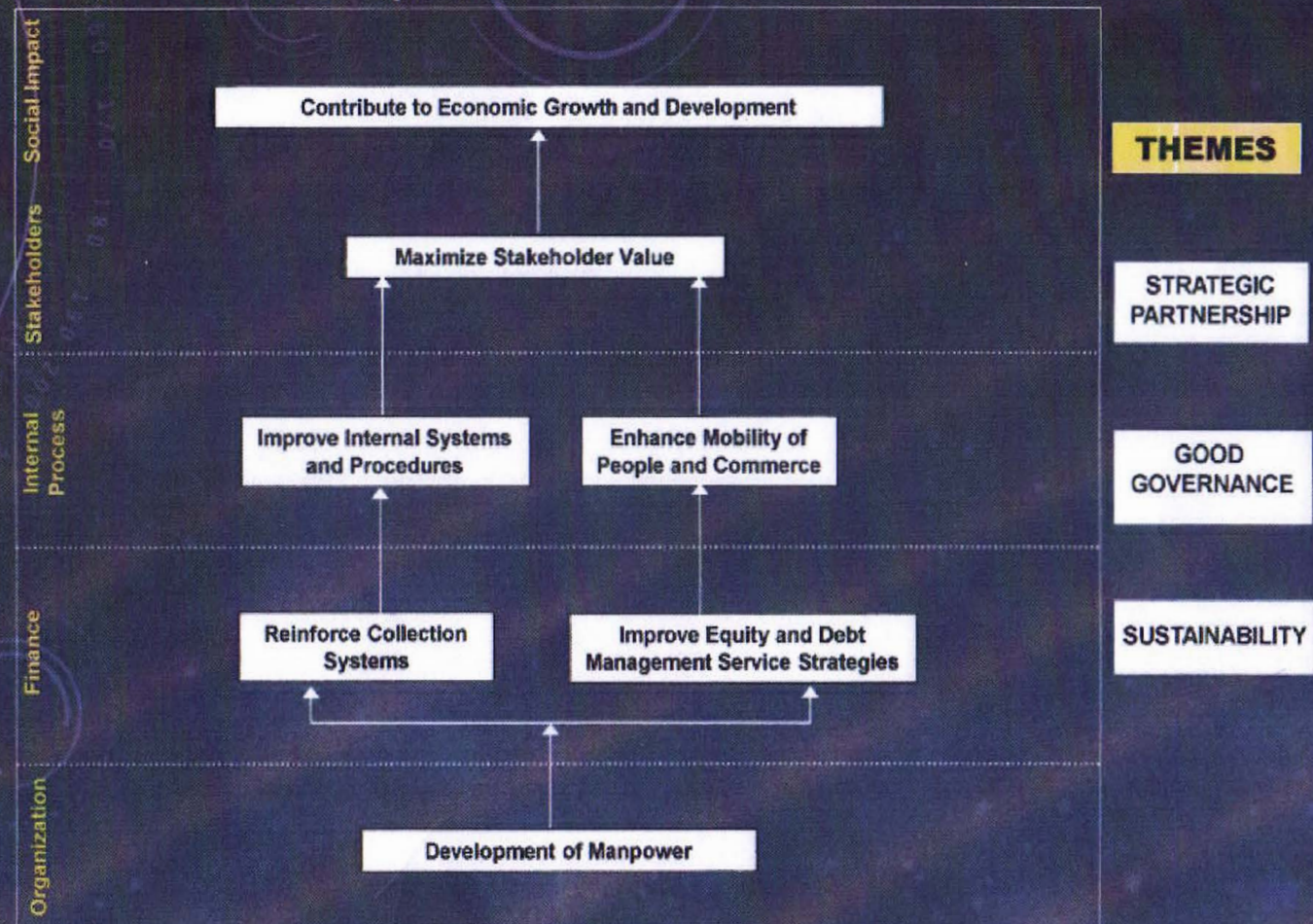
MISSION:

To enhance the capabilities of PNCC in the tollroad business and property investment to ensure financial recovery.

CORE VALUES

Professionalism
Integrity
Commitment
Innovation
Excellence
Loyalty

VISION: By 2025, PNCC would have achieved financial viability as an effective and capable partner of the government in tollroad and other related infrastructure development.



THEMES

STRATEGIC PARTNERSHIP

GOOD GOVERNANCE

SUSTAINABILITY

PNCC

PHILIPPINE NATIONAL CONSTRUCTION CORPORATION (PNCC)

Component					Baseline Data		Targets		
Objective/Measure		Formula	Weight	Rating Scale ^{a/}	2020	2021	2022	2023	
STAKEHOLDER	SO 1	Contribute to Economic Growth and Development							
	SO 2	Maximize Shareholder Value							
	SM 1	Construction and Development of Real Properties	Actual Accomplishment	10%	All or Nothing	-	-	Signed Lease Contract for 2 hectares of Sta. Rita, Bulacan property	Finalized Agreement with DOTr on Bicutan Property
	SM 2	Annual Vehicle Traffic of Metro Manila Skyway Stage 3	Actual Annual Traffic Count	5%	Actual / Target	Partial Opening of MMSS 3	13.2 Million	51 Million	54.5 Million
	SM 3	Percentage of Satisfied Customers							
		a. Partner Agencies	Number of Respondents who gave at least a Satisfactory Rating/ Total Number of Respondents	5%	Actual / Target 0% = if less than 80%	No CSS conducted	100%	90%	90%
		b. Concessionaries		5%			100%	90%	90%
	Subtotal			25%					

Component					Baseline Data		Targets		
Objective/Measure		Formula	Weight	Rating Scale ^{a/}	2020	2021	2022	2023	
INTERNAL PROCESS	SO 3	Improve Internal Systems and Procedures							
	SM 4	ISO Certification	Actual Accomplishment	5%	All or Nothing	No ISO Certification	No ISO Certification	ISO 9001: 2015 Certification	ISO 9001: 2015 Certification
	SO 4	Enhance Mobility of People and Commerce							
	SM 5	Construction and Development of Expressway Projects							
		a. Lucena to Matnog Expressway (TR5)	Actual Accomplishment	7%	Actual / Target	Start of STOA Negotiation	Continuation of STOA Negotiation	Completion of STOA Negotiation	70% Completion of Detailed Engineering Design (DED)
						STOA Negotiation not completed	No Accomplishment Reported		
		b. Pasig River Expressway (PAREX)	Actual Accomplishment	7%	Actual / Target	Signed BJVA with Selected Proponent	STOA negotiation completed	Approval of STOA by the President of the Philippines	50% Completion of Detailed Engineering Design (DED)
						OP Approval of Assignment of Usufruct			
						Start of STOA Negotiation	Project Groundbreaking was held on 24 September 2021	Approval of Final Engineering Design by TRB	

Component					Baseline Data		Targets	
Objective/Measure	Formula	Weight	Rating Scale ^{a/}		2020	2021	2022	2023
c. Greater Capital Region Integrated Expressways Network Project [formerly Integrated Airport Toll Expressways Network (IATEN)]	Actual Accomplishment	7%	Actual / Target		Entered into a Joint Venture Agreement (JVA) for IATEN Project	The TRB declared the IATEN Project as a Toll Road	Continuation of STOA Negotiation	50% Completion of Detailed Engineering Design (DED)
		3%					a. Northern Access Link (NALEX)	50% Completion on Advance Work - Construction of 15 Piers Viaduct
		5%				Ongoing Discussion on review and completion of other documents required to continue the STOA Negotiation	b. Southern Access Link (SALEX)	60% Completion of Detailed Engineering Design (DED)
		1%	All or Nothing				c. Central Access Link	Completion of STOA Negotiation
d. C6 Project (FTI-Bicutan)	Actual Accomplishment	7%	Actual / Target		Section 1 Workable Area along C5 Section: Piers 61 to 66 at 75.69% accomplishment; ongoing works at Sections 2	3.28% of Section 1, 99% completion on C5 (Pier 61 - 66), ongoing activities on P 00-27 and P 67-72 and Section 2A Southbound, and DEDs for Ramps 1-4, Section 1A and Section 2 realignment	15% of Segment 1 is Completed	50% Completion of Detailed Engineering Design (DED) for Section 2 Realignment
Subtotal		42%						

Component					Baseline Data		Targets		
Objective/Measure		Formula	Weight	Rating Scale ^{a/}	2020	2021	2022	2023	
FINANCIAL	SO 5	Reinforce Collection System							
	SM 6	Percentage of Receivables Collected	Actual Collection	10%	Actual / Target	-	-	Collection of at least 50% of Guaranty Deposits from Investors Assurance Corp. (IAC)	Collection of the Consigned amount of ₱18 Million by Ley Construction and Development Corporation (LCDC)
	SO 6	Improve Equity and Debt Management Service Strategies							
	SM 7	Revenues	Service Income + Lease Income + Share in JVAs +Dividend Income + Interest Income	10%	Actual / Target	₱182.95 Million	₱255.95 Million	₱521.02 Million	₱686.61 Million
	SM 8	Conversion of Debt-to-Equity	Actual Accomplishment	1%	All or Nothing	No development on the target	No development on the target	Finalization of Debt Payment Scheme with PMO	Finalization of Debt Payment Scheme with PMO
	SM 9	Budget Utilization Rate (BUR)	Actual Disbursement / Scheduled Disbursement (Net of PS Cost)	7%	Actual / Target	N/A	N/A	90%	90%
		Subtotal		28%					

Component					Baseline Data		Targets	
Objective/Measure		Formula	Weight	Rating Scale ^{a/}	2020	2021	2022	2023
LEARNING & GROWTH	SO 7	Development of Manpower						
	SM 10	Percentage of Employees Meeting Required Competencies	Actual Accomplishment	5%	All or Nothing	No Board-approved Competency Framework	Board-approved Competency Framework	Establish Baseline
			Subtotal	5%				
			TOTAL	100%				

a/ But not to exceed the assigned weight per indicator.

For GCG:


JUSTICE ALEX L. QUIROZ (RET.)
Chairperson

For PNCC:


ATTY. MIGUEL E. UMALI
President & CEO