



Office of the President of the Philippines
GOVERNANCE COMMISSION
FOR GOVERNMENT OWNED OR CONTROLLED CORPORATIONS
3/F, BDO Towers Paseo, 8741 Paseo De Roxas, Makati City, Philippines 1226



1-0240-14-06-2022-010724



Management
System
ISO 9001:2015
www.tuv.com
ID: 0105080109

06 June 2022

MR. HERCULANO C. CO, JR.

Chairman

MR. MIGUEL E. UMALI

President and CEO (PCEO)

PHILIPPINE NATIONAL CONSTRUCTION CORPORATION (PNCC)

KM. 15 East Service Road, Bicutan

Parañaque City

RE: TRANSMITTAL OF 2022 PERFORMANCE SCORECARD

Dear Chairman Co and PCEO Umali,

This is to formally transmit the Charter Statement and Strategy Map (**Annex A**) and 2022 Performance Scorecard (**Annex B**) of PNCC. The same is to be posted in PNCC's website, in accordance with Section 43 of GCG Memorandum Circular (M.C.) No. 2012-07.¹

The PNCC-proposed Performance Scorecard submitted through its letter dated 10 February 2022² was **MODIFIED** based on the discussions made during the Technical Panel Meeting (TPM) held on 02 March 2022 and evaluation of additional documents submitted through a letter dated 22 March 2022.³

We take this opportunity to remind PNCC that Item 5 of GCG Memorandum Circular No. 2017-02⁴ mandates GOCCs to submit Quarterly Monitoring Reports and upload the same in the GOCC's website within thirty (30) calendar days from the close of each quarter. PNCC is thus directed to submit its revised Quarterly Targets based on the attached scorecard upon submission of its Quarterly Monitoring Report for 2022.

Finally, under GCG M.C. No. 2017-02, GOCCs can no longer renegotiate the targets set in their Performance Scorecards for the current year. Thus, any request for modification in the 2022 Performance Scorecard will instead be considered during the validation of the reported annual accomplishments.

FOR PNCC'S INFORMATION AND COMPLIANCE.

Very truly yours,

Digitally signed by:
CHAIRMAN SAMUEL G. DAGPIN, JR.

Digitally signed by:
OIC-COMMISSIONER* JAYPEE O. ABESAMIS

PHILIPPINE NATIONAL CONSTRUCTION CORPORATION	
Office of the President	
Received by:	vgmadrona
Control No.	127-132
Date	6/16/2022
Time	12:30 PM

Digitally signed by:
COMMISSIONER MARITES C. DORAL

¹ CODE OF CORPORATE GOVERNANCE FOR GOCCs, dated 28 November 2012.

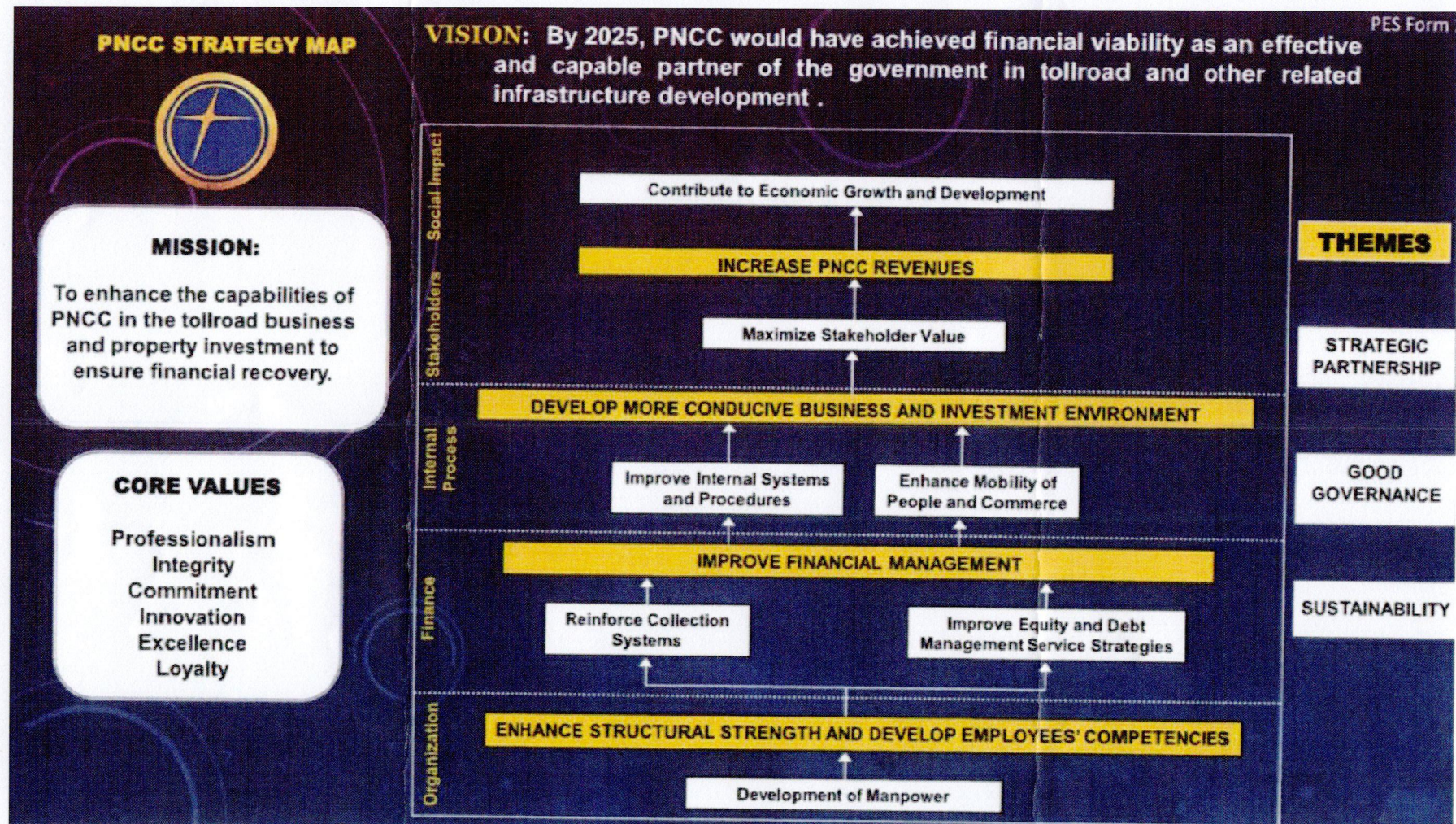
² Officially received by the Governance Commission on 09 February 2022.

³ Officially received by the Governance Commission on 22 March 2022.

⁴ INTERIM PES FOR THE GOCC SECTOR, dated 30 June 2017.

* By virtue of the Memorandum from the Executive Secretary dated 21 March 2022.

PHILIPPINE NATIONAL CONSTRUCTION CORPORATION (PNCC)



PHILIPPINE NATIONAL CONSTRUCTION CORPORATION (PNCC)

	Component				Baseline Data		Targets		
	Objective/Measure	Formula	Wt.	Rating System ^{a/}	2019	2020	2021	2022	
STAKEHOLDERS	SO 1	Maximize Stakeholder Value							
	SM 1	Construction and Development of Real Properties (FCA Properties)	Actual Accomplishment	10%	All or Nothing	Signed Lease Contract for Porac Property	Measure Excluded	Signed Lease Contract for 9.9 hectares of FCA Property	Signed Lease Contract for 2 hectares of Sta. Rita, Bulacan Property
						Signed Lease Contract for only one (1) Area in FCA Property			
						Bicutan Property is to be encompassed by the Metro Manila Subway Project (MMSP) Phase 1			
	SM 2	Percentage of Satisfied Customers			Actual / Target 0% if less than 80%	No Survey Conducted	No CSS Conducted	Using the Enhanced Standard Guideline on the Conduct of Customer Satisfaction Survey by the GCG	
		a. Partner Agencies	Number of respondents which gave at least a Satisfactory rating / Total number of respondents	5%				90%	90%
		b. Concessionaires		5%				90%	90%
		Sub-total		20%					

INTERNAL PROCESS										
Component					Baseline Data		Targets			
Objective/Measure		Formula	Wt.	Rating System ^{a/}	2019	2020	2021	2022		
INTERNAL PROCESS	SO 2	Improve Internal Systems and Procedures								
	SM 3	ISO Certification	Actual Accomplishment	10%	All or Nothing	No ISO Certification	No ISO Certification	ISO 9001:2015 Certification	ISO 9001:2015 Certification	
	SO 3	Enhance Mobility of People and Commerce								
	SM 4	Construction and Development of Expressway Projects								
		a. Lucena-Matnog Expressway/SLEX TR5	Actual Accomplishment	5%	All or Nothing	Undergoing Negotiations with TRB	Start of STOA Negotiation	Commencement/ Continuation of STOA Negotiation	Completion of STOA Negotiation	
							STOA Negotiation not completed	Project Groundbreaking		
		b. Pasig River Expressway Project (PAREX)	Actual Accomplishment	5%	All or Nothing	Signed Business Joint Venture Agreement with San Miguel Holdings Corporation (SHMC)	Signed BJVA with Selected Proponent	Completion of STOA Negotiation	Approval of the STOA by the President of the Philippines	
				1%			OP Approval of Assignment of Usufruct	Project Groundbreaking	Approval of Final Engineering Design by TRB	
							Start of STOA Negotiation			
	c. Greater Capital Region Integrated Expressways Network Project [formerly Integrated Airport Toll Expressways Network (IATEN)]				All or Nothing	N/A	Entered into a Joint Venture Agreement (JVA) for IATEN Project	TRB Declaration as Toll Road Project	Completion of STOA Negotiation	
1. Northern Access Link	Actual Accomplishment	3%								

Component					Baseline Data		Targets	
Objective/Measure		Formula	Wt.	Rating System ^{a/}	2019	2020	2021	2022
	2. Southern Access Link		1%			Approval of Assignment of Usufruct by OP on IATEN Project	On-going Discussions of Legal, Technical and Financial Aspects in the Negotiations	Completion of STOA Negotiation
	3. Central Access Link		1%					Completion of STOA Negotiation
	Increase Annual Average Daily Traffic							
	a. Metro Manila Skyway Stage 3	Actual Annual Traffic Count	10%	Actual / Target	a. Completion Rates: i. San Juan River = 90.94% ii. Section 3 = 89.47% iii. Section 4 = 75.18% iv. Balintawak = 52.28%	Partial Opening of MMSS 3	43 Million Annual Vehicle Traffic	51 Million Annual Vehicle Traffic
					b. No actual toll operations			
	b. C6 Project (FTI-Bicutan)	Actual Accomplishment	2%	Actual / Target	1.74% of Section 1 Completed	Section 1 Workable Area along C5 Section: Piers 61 to 66 at 75.69% accomplishment ; ongoing works at Sections 2	15% of Segment 1 Completed	15% of Segment 1 Completed
	Sub-total		38%					

	Component				Baseline Data		Targets		
	Objective/Measure	Formula	Wt.	Rating System ^{a/}	2019	2020	2021	2022	
FINANCE	SO 4	Reinforce Collection Systems							
	SM 6	Percentage of Receivables Collected	Actual collection divided by Target collection	6%	Actual / Target	Collection of 49.88% of the Judgment/ Monetary Award from MIAA	Measure Excluded	100% Collection of the ₱100.55 million Receivables from PMMA	Collection of at least 50% of Guaranty Deposits from Investors Assurance Corporation (IAC)
	SO 5	Improve Equity and Debt Management Service Strategies							
	SM 7	Revenues (in Millions)	Service Income + Lease Income + Share in JVAs + Dividend Income + Interest Income	15%	Actual / Target	13.35% increase from 2018 (₱248.45 M)	₱182.95 (excluding Lease Income)	₱402.09	₱521.02
	SM 8	Conversion of Debt-to-Equity	Actual amount of debt-converted-to-equity divided by Actual amount-of-debt to be converted to equity	1%	All or Nothing	Still subject to negotiation	No development on the target	Finalization of Debt Payment Scheme with PMO	Finalization of Debt Payment Scheme with PMO
	SM 9	Budget Utilization Rate (BUR)	<u>Actual Disbursement</u> Total Approved COB (Both Net of PS Cost)	10%	Actual / Target	N/A	N/A	N/A	90%
		Sub-total		32%					

	Component				Baseline Data		Targets	
	Objective/Measure	Formula	Wt.	Rating System ^{a/}	2019	2020	2021	2022
LEARNING AND GROWTH	SO 6	Development of Manpower						
	SM 10	Percentage of Employees Meeting Required Competencies	Actual Accomplishment	10%	Actual / Target	No Board-approved Competency Framework	No Board-approved Competency Framework	Board-approved Competency Model Establish Baseline
		<i>Sub-total</i>	<i>10%</i>					
		TOTAL	100%					

a/ But not to exceed the weight assigned per indicator.